



celtic
HOT TUBS



The Celtic Journey

The ancient Celt's journey in Europe dates back to 800 BC and over the years, setup shop everywhere from Turkey and Ireland to Britain and Spain.

The Celt's were a people described as whimsical, romantic, emotional and with great powers of imagination. They were also a spiritual people and many of their ancient symbols, the Triskelion, Shamrock, Tree of Life are still seen in our day to day lives and perceived to be positive symbols that have been revered for millennia. In fact, one of the Triskelion symbols that depicts the "motion of action," we have chosen as the symbol of our exclusive Turbo Boost Whirlpool system.

Another connotation and the one that has inspired us the most, is the three sided Triskelion. This symbol of "spirit, mind and body" are what we believe can be enhanced while relaxing in your Celtic Hot Tub.

From all us "would be Celt's", we hope you'll choose a Celtic Hot Tub and begin your Journey today!



American Made. Celtic Tough.

With over 10 decades of industry expertise, Celtic Hot Tubs is dedicated to providing the highest quality product with long-lasting performance and dependability; a durable product engineered with customer satisfaction in mind. Our spas come fully loaded with many of the same features you see in a high-end luxury hot tub, but at a more affordable price. Every member of our team is dedicated to meeting high standards of customer service.



TRISKELION HYDROTHERAPY SYSTEM

Ancient Celtic Symbolology suggests that a three sided symbol illustrating motion also can relate to the concept of Spirit, Mind and Body. Our Turbo Boost Whirlpool System offers a passive therapy benefit from the rotating body of water within the hot tub. The alternative setting incorporates the full collection of the Triskelion jets that vary in size and style resulting in a targeted pin point therapy to the different muscle groups within your body.

Overall, the experience of simply soaking in crystal clear hot water, add-in the twist of a whirlpool, or the deep penetrating heat created by the jets and you'll relate to the primary benefits of hydrotherapy and how they improve your Spirit, Mind and Body.

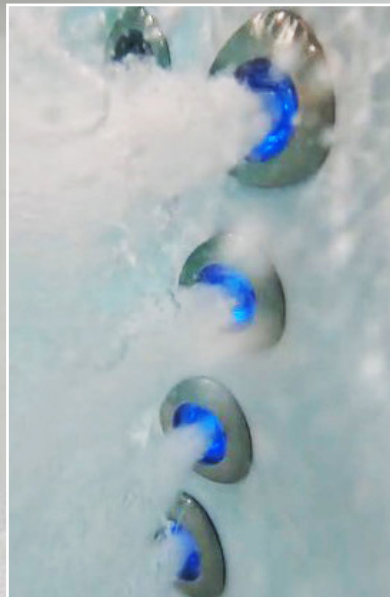


NEW LOW PROFILE TECHNOLOGY

INCREASED POWER AND PERFORMANCE, WITH EXCEPTIONAL COMFORT!

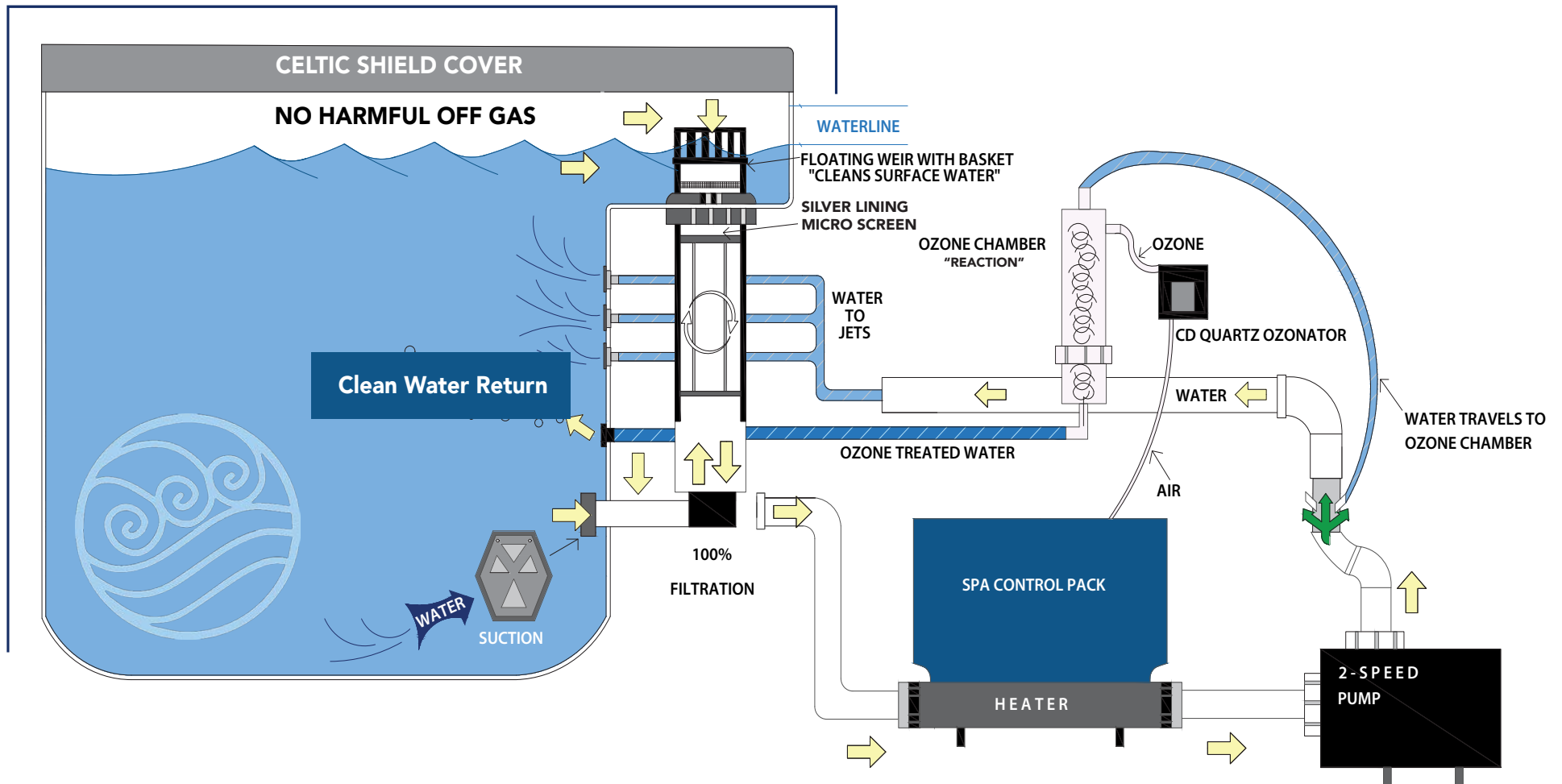


BACKLIT TURBO BOOST



CELTIC CLEAN WATER MANAGEMENT SYSTEM

With one of the industry's state-of-the-art electronic control systems, the Celtic Hot Tub will start itself twice daily for a period of time you can easily select. During this filter cycle, as we refer to it, the pump will operate at a quiet and low-flow setting, where it will run cost efficiently while it skims water from both the lower level of the tub and more importantly, directly from the water's surface as it skims off any floating particulates that would otherwise form a water line. Next, all the water is sent through the exclusive Silver Lining Micro Screen Cartridge and treated by the Celtic Clean Mineral cartridge (optional). For centuries, Earth's natural minerals, like silver and zinc, have been known for their natural qualities to kill bacteria and help the clean water. Perhaps best of all, every Celtic Clean system includes a built-in Ozone Generator, and a very special reaction chamber that allows the ozone to environmentally and safely breakdown to pure oxygen. Whenever the hot tub is running, Celtic Clean is working as it oxidizes finite sized particles, kills bacteria and significantly reduces the amount of chlorine or bromine required.



CELTIC SHIELD OF PROTECTION

CELTIC SHIELD INTERIOR

HDPE "high density polyethylene" plastic is a well proven material known for its outstanding strength, durability and longevity especially when used in outdoor settings.



CELTIC SHIELD EXTERIOR

Also made with HDPE, the Celtic Shield Exterior cabinets are built to be strong, and will survive even harsh outdoor elements while they remain colorfast!



CELTIC SHIELD COVER

Designed to keep the heat in and the elements out, this cover is incased in high performance polyester similar to fabrics developed for outdoor furniture yet it is 70% lighter, 5x stronger and will never "cold crack" as marine grade vinyl products used for hot tub covers often do.

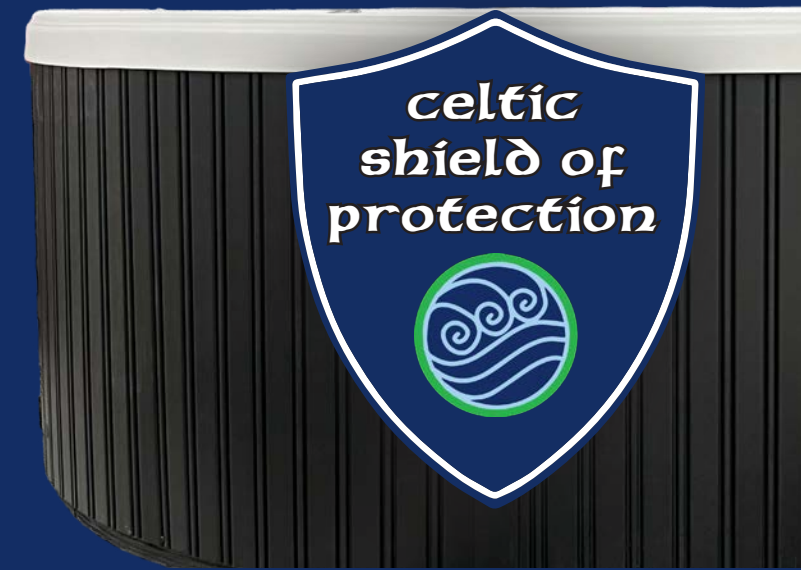


CELTIC SHIELD INSULATION

Your Celtic Hot Tub is designed to run as efficiently as possible! The backside of the shell and bottom frame are covered with a thick layer of "Black Knight" closed cell foam. Around the entire frame, we install a double-sided reflective heat wrap holding the heat in as well as the colder air out.



american made. celtic tough.



Rest assured all these products are protected by the Celtic Shield Warranty.
10 Years Structure & Surface, 3 Years Equipment, 3 years plumbing, 3 years jets and 3 years cabinet.
See back page to scan for warranty information.

CELTIC GLOW

For years we have known about the emotional effects created from specific colors. How warm colors can spark emotions ranging from comfort and warmth and cool colors can create a sense of calmness. The benefits of Celtic Glow, our LED- colored lighting system, range from practical to emotional. Color lighting also adds a visually appealing dimension to the hot tub area. The changing colors can create a captivating and mesmerizing visual display making the hot tub an attractive focal point in your outdoor or indoor space. Since much of your time in the hot tub will be in the evening when the lighting is necessary to provide a safe night time environment, Celtic Glow is included in all standard Celtic Hot Tubs.



charm

Weight	130 lbs / 710 lbs filled
Measurement	35" x 48" x 42"
Water Capacity	80 gal
Electrical Requirements	110v / 15 amp
Jet Pump	2HP/ 2 Speed
Heater	1KW
Jets	14 (2 Turbo Boost Jets)
Topside Control	TP 260 Solid State
Filtration	CD Ozonator
Lighting	9 Color LED Light
Interior Shell	High Density Polyethylene Weatherable & Strong
Exterior Cabinet	HDPE Black
In.Touch Remote	N/A
Celtic Clean	N/A
Cover	Celtic Shield Cover
Colors	Seashell

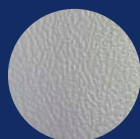


Seashell



luna 118

Weight	360 lbs / 2,740 lbs filled
Measurement	34" Depth / 78" Diameter
Water Capacity	280 gal
Electrical Requirements	110v / 15 amp Dedicated Circuit
Jet Pump	2 HP / 2 Speed / 110v
Convertible Voltage Heater	110v = 1KW Heat 220v = 4KW On Demand
Jets	18 (2 Turbo Boost Jets)
Topside Control	k500 Programmable LED Color System
Filtration	Silver Lining Micro Screen Cartridge
Lighting	LED Celtic Glow
Interior Shell	High Density Polyethylene Weatherable & Strong
Exterior Cabinet	Celtic Shield Gray with Select Option
In.Touch Remote	Optional
Celtic Clean	Yes
Cover	Celtic Shield Cover
Colors	Titanium, Seashell



Titanium



Seashell



mystic 120

Weight	495 lbs / 3,045 lbs filled
Measurement	34" Depth / 78" Square
Water Capacity	300 gal
Electrical Requirements	110v / 15 amp Dedicated Circuit
Jet Pump	2 HP / 2 Speed / 110v
Convertible Voltage Heater	110v = 1KW Heat 220v = 4KW On Demand
Jets	20 (2 Turbo Boost Jets)
Topside Control	k500 Programmable LED Color System
Filtration	Silver Lining Micro Screen Cartridge
Lighting	Celtic Glow w/ Sconce Lighting
Interior Shell	High Density Polyethylene Weatherable & Strong
Exterior Cabinet	HDPE Black Select Cabinet Optional
In.Touch Remote	Optional
Celtic Clean	Yes
Cover	Celtic Shield Cover
Color	Titanium, Seashell



Titanium

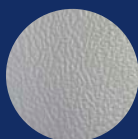


Seashell



solstice 122

Weight	470 lbs / 3,445 lbs filled
Measurement	34" Depth / 78" x 84"
Water Capacity	350 gal
Electrical Requirements	110v / 15 amp Dedicated Circuit
Jet Pump	2 HP / 2 Speed / 110v
Convertible Voltage Heater	110v = 1KW Heat 220v = 4KW On Demand
Jets	22 (2 Turbo Boost Jets)
Topside Control	k500 Programmable LED Color System
Filtration	Silver Lining Micro Screen Cartridge
Lighting	Celtic Glow w/Sconce Lighting
Interior Shell	High Density Polyethylene Weatherable & Strong
Exterior Cabinet	HDPE Black Select Cabinet Optional
In.Touch Remote	Optional
Celtic Clean	Yes
Cover	Celtic Shield Cover
Color	Titanium, Seashell



Titanium



Seashell



clover 124

Weight	600 lbs / 3,790 lbs filled
Measurement	34" Depth / 84" Square
Water Capacity	375 gal
Electrical Requirements	110v / 15 amp Dedicated Circuit
Jet Pump	2 HP / 2 Speed / 110v
Convertible Voltage Heater	110v = 1KW Heat 220v =4KW On Demand
Jets	24 (2 Turbo Boost Jets)
Topside Control	k500 Programmable LED Color System
Filtration	Silver Lining Micro Screen Cartridge
Lighting	Celtic Glow w/Sconce Lighting
Interior Shell	High Density Polyethylene Weatherable & Strong
Exterior Cabinet	HDPE Black Select Cabinet Optional
In.Touch Remote	Optional
Celtic Clean	Yes
Cover	Celtic Shield Cover
Color	Titanium, Seashell



Titanium



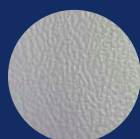
Seashell



luna 124

Weight	360 lbs / 2,740 lbs filled
Measurement	34" Depth / 78" Diameter
Water Capacity	280 gal
Electrical Requirements	220v / 50 amp Dedicated Circuit w/GFCI
Jet Pump	4 HP / 2 Speed / 220v
Heater	220v =4KW Heat Heats on high & low speed
Jets	24 (4 Turbo Boost Jets)
Topside Control	k500 Programmable LED Color System
Filtration	Silver Lining Micro Screen Cartridge
Lighting	Celtic Glow w/Sconce Lighting
Interior Shell	High Density Polyethylene Weatherable & Strong
Exterior Cabinet	HPDE Black Select Optional
In.Touch Remote	Optional
Celtic Clean	Yes
Cover	Celtic Shield Cover
Colors	Titanium, Seashell

**4HP
220V**



Titanium



Seashell



mystic 126

Weight	495 lbs / 3,045 lbs filled
Measurement	34" Depth / 78" Square
Water Capacity	300 gal
Electrical Requirements	220v / 50 amp Dedicated Circuit w/GFCI
Jet Pump	4 HP / 2 Speed / 220v
Convertible Voltage Heater	220v =4KW Heat Heats on high & low speed
Jets	26 (4 Turbo Boost Jets)
Topside Control	k500 Programmable LED Color System
Filtration	Silver Lining Micro Screen Cartridge
Lighting	Celtic Glow w/Sconce Lighting
Interior Shell	High Density Polyethylene Weatherable & Strong
Exterior Cabinet	HPDE Black Select Cabinet Optional
In.Touch Remote	Optional
Celtic Clean	Yes
Cover	Celtic Shield Cover
Color	Titanium, Seashell

**4HP
220V**



Titanium



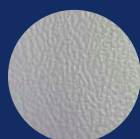
Seashell



solstice 128

Weight	470 lbs / 3,445 lbs filled
Measurement	34" Depth / 78" x 84"
Water Capacity	350 gal
Electrical Requirements	220v / 50 amp Dedicated Circuit w/GFCI
Jet Pump	4 HP / 2 Speed / 220v
Heater	220v =4KW Heat Heats on high & low speed
Jets	28 (4 Turbo Boost Jets)
Topside Control	k500 Programmable LED Color System
Filtration	Silver Lining Micro Screen Cartridge
Lighting	Celtic Glow w/Sconce Lighting
Interior Shell	High Density Polyethylene Weatherable & Strong
Exterior Cabinet	HPDE Black Select Cabinet Optional
In.Touch Remote	Optional
Celtic Clean	Yes
Cover	Celtic Shield Cover
Colors	Titanium, Seashell

**4HP
220V**



Titanium



Seashell



clover 130

Weight	600 lbs / 3,790 lbs filled
Measurement	34" Depth / 84" Square
Water Capacity	375 gal
Electrical Requirements	220v / 50 amp Dedicated Circuit w/GFCI
Jet Pump	4 HP / 2 Speed / 220v
Convertible Voltage Heater	110v = 1KW Heat 220v = 4KW On Demand
Jets	30 (4 Turbo Boost Jets)
Topside Control	k500 Programmable LED Color System
Filtration	Silver Lining Micro Screen Cartridge
Lighting	Celtic Glow w/Sconce Lighting
Interior Shell	High Density Polyethylene Weatherable & Strong
Exterior Cabinet	HPDE Black Select Cabinet Optional
In.Touch Remote	Optional
Celtic Clean	Yes
Cover	Celtic Shield Cover
Color	Titanium, Seashell

**4HP
220V**



Titanium



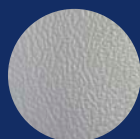
Seashell



mystic 236

Weight	495 lbs / 3,045 lbs filled
Measurement	34" Depth / 78" Square
Water Capacity	300 gal
Electrical Requirements	220 v / 50 amp Circuit Dedicated Circuit w/GFCI
Jet Pump	1 - 4 HP / 2 Speed / 220v 1 - 4 HP / 1 Speed / 220v
Heater	220v =4KW Heat Heats on Demand
Jets	36 (8 Turbo Boost Jets)
Topside Control	k500 Programmable LED Color System
Filtration	Silver Lining Micro Screen Cartridge
Lighting	Celtic Glow w/Sconce Lighting
Interior Shell	High Density Polyethylene Weatherable & Strong
Exterior Cabinet	HPDE Black Select Cabinet Optional
In.Touch Remote	Optional
Celtic Clean	Yes
Cover	Celtic Shield Cover
Colors	Titanium, Seashell

**2X
4HP
220V**



Titanium



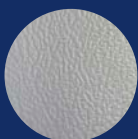
Seashell



solstice 240

Weight	470 lbs / 3,445 lbs filled
Measurement	34" Depth / 78" x 84"
Water Capacity	350 gal
Electrical Requirements	220 v / 50 amp Circuit Dedicated Circuit w/GFCI
Jet Pumps	1 - 4 HP / 2 Speed / 220v 1 - 4 HP / 1 Speed / 220v
Heater	220v =4KW Heat Heats on Demand
Jets	40 (8 Turbo Boost Jets)
Topside Control	k500 Programmable LED Color System
Filtration	Silver Lining Micro Screen Cartridge
Lighting	Celtic Glow w/Sconce Lighting
Interior Shell	High Density Polyethylene Weatherable & Strong
Exterior Cabinet	HPDE Black Select Cabinet Optional
In.Touch Remote	Optional
Celtic Clean	Yes
Cover	Celtic Shield Cover
Colors	Titanium, Seashell

**2X
4HP
220V**



Titanium



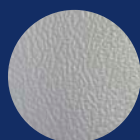
Seashell



clover 250

Weight	600 lbs / 3,790 lbs filled
Measurement	34" Depth / 84" Square
Water Capacity	375 gal
Electrical Requirements	220v / 50 amp Dedicated Circuit w/GFCI
Jet Pump	1 - 4 HP / 2 Speed / 220v 1 - 4 HP / 1 Speed / 220v
Heater	220v =4KW Heat Heats on demand
Jets	50 (8 Turbo Boost Jets)
Topside Control	k500 Programmable LED Color System
Filtration	Silver Lining Micro Screen Cartridge
Lighting	Celtic Glow w/Sconce Lighting
Interior Shell	High Density Polyethylene Weatherable & Strong
Exterior Cabinet	HPDE Black Select Cabinet Optional
In.Touch Remote	Optional
Celtic Clean	Yes
Cover	Celtic Shield Cover
Colors	Titanium, Seashell

**2X
4HP
220V**



Titanium



Seashell







celtic HOT TUBS



Celtic Hot Tubs • 3100 Bowling Green Rd, Franklin, KY 42134 • 270.306.6220 • celtichottubs.com